

## SAFETY ALERT 02-S-3



### FOREST RESOURCES ASSOCIATION INC.

600 JEFFERSON PLAZA, SUITE 350  
ROCKVILLE, MARYLAND 20852

PHONE: 301/838-9385

FAX: 301/838-9481

## DISK SAW TOOTH PROPELLED THROUGH WINDSHIELD

February 2002

**BACKGROUND:** A track cutter operator was clearcutting a mixed stand of hardwood and pine using a feller-buncher with a high-speed disk saw head on a hot, late summer day on rolling terrain in the Appalachians.

**PERSONAL CHARACTERISTICS:** The 22-year-old operator had worked for this employer for one year. He was working inside an enclosed cab and had operated this particular machine for only one month.

**UNSAFE ACT OR CONDITION:** The operator returned to the logging deck after experiencing a noticeable vibration in the sawhead for some time.

**ACCIDENT:** There he found a sawtooth from his machine had struck and broken the windshield on a pickup truck parked over a hill, approximately 500 feet away from the cutting area. After inspecting the sawhead, he found that two teeth were missing from the saw disk.

**INJURY:** There were no injuries, but it cost \$420 to replace the truck windshield.

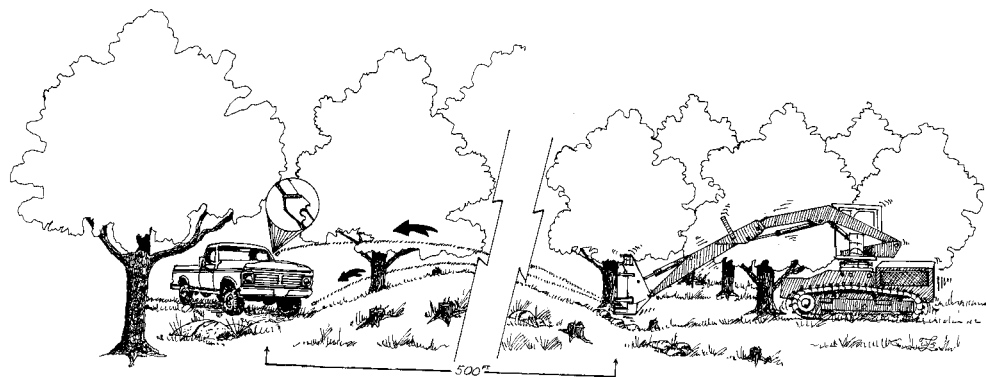
**RECOMMENDATIONS FOR CORRECTION:** Manufacturers of sawheads recommend the following:

Immediate shutdown and inspection if an imbalance (vibration) occurs.

Immediate shutdown and inspection after contact with rocks or foreign material.

A daily inspection before use.

Some sawheads can be retrofitted with a deflector guard that could possibly have prevented this accident. (See FRA Technical Release 01-R-14, *Safety Deflectors for High-Speed Disk Saws.*)



**Note:** The equipment owner reports no more problems with lost teeth since replacing worn bolts and dull teeth more frequently.

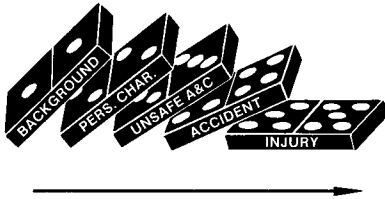
Reviewed by:

Rick Meyer

Appalachian Technical Division Forester

Please follow equipment manufacturers' recommendations for safe operation and maintenance procedures.





This Safety Alert analyzes an injury in accordance with the chain of events represented by the five dominoes at left. Pioneer industrial safety experts H. W. Heinrich and Alfred Lateiner developed this accident analysis system to provide a graphic sense of how injuries can be avoided. Their methodology has been accepted by safety professionals worldwide.

## SAFETY MEETING REPORT

Date: \_\_\_\_\_ Company: \_\_\_\_\_

Topic(s) Discussed: \_\_\_\_\_

\_\_\_\_\_  
\_\_\_\_\_

Names of Employees Attending:

_____	_____
_____	_____
_____	_____
_____	_____
_____	_____
_____	_____

Conducted By: \_\_\_\_\_

Signed: \_\_\_\_\_

Comments / Recommendations:

\_\_\_\_\_  
\_\_\_\_\_  
\_\_\_\_\_  
\_\_\_\_\_  
\_\_\_\_\_  
\_\_\_\_\_  
\_\_\_\_\_  
\_\_\_\_\_