

SAFETY ALERT 02-S-1



FOREST RESOURCES ASSOCIATION INC.

600 JEFFERSON PLAZA, SUITE 350
ROCKVILLE, MARYLAND 20852

PHONE: 301/838-9385

FAX: 301/838-9481

LOG PILE COLLAPSES ON TRUCK DRIVER

February 2002

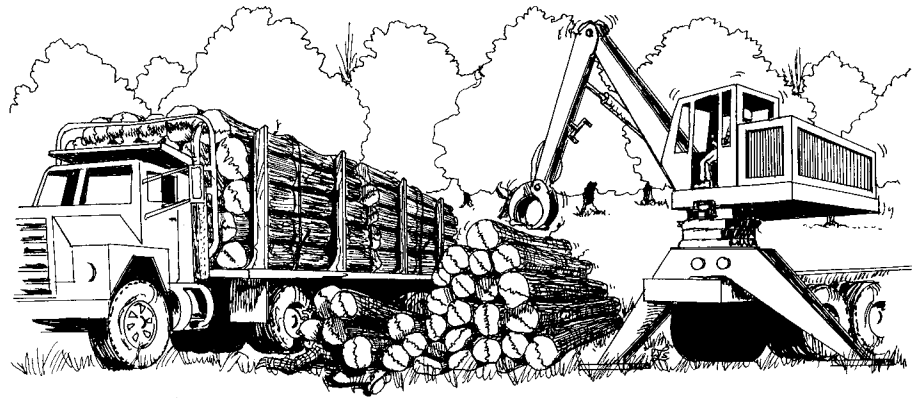
BACKGROUND: A truck driver was binding down a tractor-trailer load of hardwood logs at a timber harvesting operation on a clear, hot spring day in the southern Appalachians.

PERSONAL CHARACTERISTICS: The 40-year-old driver had worked as a truck driver for at least two years and was considered fully trained. He had no known physical disabilities and no history of accidents. He was wearing a hard hat.

UNSAFE ACT OR CONDITION: His truck was positioned alongside a hydraulic knuckleboom loader. Some yellow poplar logs had been stacked on the ground between the loader and the log trailer. The truck driver walked between the loaded trailer and the stack of yellow poplar logs to hook the load binders. The motor of the knuckleboom loader was still running.

ACCIDENT: The stack of logs gave way. The logs knocked the truck driver down, rolled over his back, and pinned him.

INJURY: The logs crushed the truck driver, causing severe internal injuries. Crew members immediately phoned 911, and the logs were removed from the



injured man as quickly as possible using the knuckleboom loader and a chain saw. Other employees attempted to administer rescue breathing to the injured truck driver. The paramedics arrived 34 minutes after the phone call. The truck driver died on the way to the hospital.

RECOMMENDATIONS FOR CORRECTION:

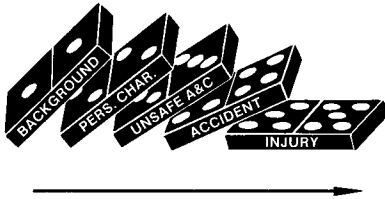
- Loaded trucks should be moved a safe distance from the loading area, or other activities at the loading area should cease, before load binders are placed and secured.
- Stacks of logs should be placed so that danger of their rolling is minimized. Stack logs on the deck in a position perpendicular to the logs on the trailer. Chocks may help to prevent log movement.
- The truck driver and the loader operator should maintain communication and be aware of each other's actions on the logging deck.

Reviewed by:

Rick Meyer

Appalachian Technical Division Forester

Please follow equipment manufacturers' recommendations for safe operation and maintenance procedures.



This Safety Alert analyzes an injury in accordance with the chain of events represented by the five dominoes at left. Pioneer industrial safety experts H. W. Heinrich and Alfred Lateiner developed this accident analysis system to provide a graphic sense of how injuries can be avoided. Their methodology has been accepted by safety professionals worldwide.

SAFETY MEETING REPORT

Date: _____ Company: _____

Topic(s) Discussed: _____

Names of Employees Attending:

_____	_____
_____	_____
_____	_____
_____	_____
_____	_____
_____	_____

Conducted By: _____

Signed: _____

Comments / Recommendations:

