

SAFETY ALERT 01-S-28



FOREST RESOURCES ASSOCIATION INC.

600 JEFFERSON PLAZA, SUITE 350
ROCKVILLE, MARYLAND 20852

PHONE: 301/838-9385

FAX: 301/838-9481

TRUCK TIRE PITCHES ROCK THROUGH WINDSHIELD

October 2001

BACKGROUND: An operations forester was traveling in a pickup truck on a private gravel road in late summer. Conditions were dry and very dusty. The gravel road had been recently graded.

PERSONAL CHARACTERISTICS: The forester was in his late 40s and had 23 years of experience working in the Northeast.

UNSAFE ACT OR CONDITIONS: Upon meeting a loaded log truck approaching his pickup, the forester slowed and steered to the right of the roadway. Both vehicles were kicking up a dense cloud of dust.

ACCIDENT: As the forester entered the dust cloud, a cucumber-sized rock hit and partially penetrated the windshield directly in front of his face.

INJURIES: As the rock entered the cab, it showered the forester with glass fragments. Fortunately, he was wearing safety glasses, and did not sustain any injury to his eyes or other parts of his body. The forester braked his vehicle and pulled over to the side of the road. The log truck driver continued on, unaware of the incident. Thanks to the truck's safety glass windshield, the rock stopped without coming completely through and into the cab. The rock remained stuck, about a third of the way through the windshield, when the forester came to a stop.

EQUIPMENT DAMAGE: A smashed windshield was the only damage to the truck.

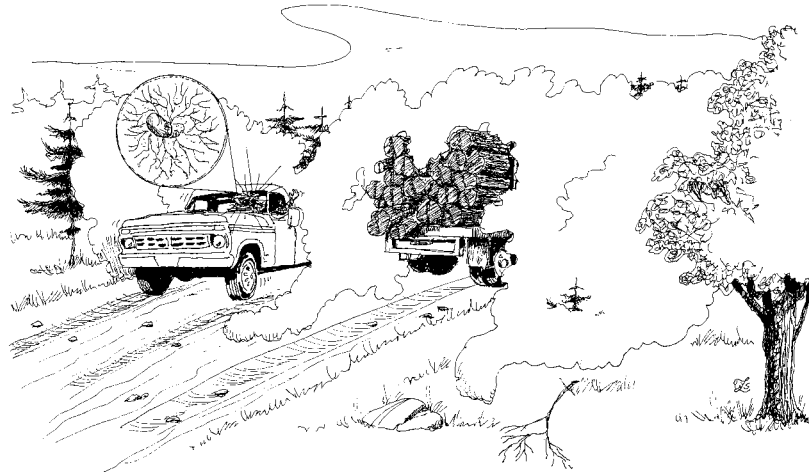
RECOMMENDATIONS FOR CORRECTION: Personnel involved in forest products industry commonly travel gravel roads. Loose rocks on gravel roads are common and possibly unavoidable. While accidents like this one are unlikely, drivers should be aware of the possibility when meeting trucks. When meeting an oncoming log truck, pull over to the right and let it pass. Wear safety glasses. Road graders should rock-rake newly graded roads as soon as possible. Most truck windshields are constructed of laminated safety glass but it's worth double-checking to be sure that they are. All truckers should conduct a pre-trip inspection of their tractor and trailer tires before leaving the logging site and before heading onto paved public roads.

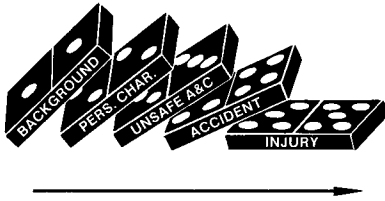
Reviewed by:

Patrick Hackley

Northeastern Technical Division Forester

Please follow equipment manufacturers' recommendations for safe operation and maintenance procedures.





This Safety Alert analyzes an injury in accordance with the chain of events represented by the five dominoes at left. Pioneer industrial safety experts H. W. Heinrich and Alfred Lateiner developed this accident analysis system to provide a graphic sense of how injuries can be avoided. Their methodology has been accepted by safety professionals worldwide.

SAFETY MEETING REPORT

Date: _____ Company: _____

Topic(s) Discussed: _____

Names of Employees Attending:

_____	_____
_____	_____
_____	_____
_____	_____
_____	_____
_____	_____

Conducted By: _____

Signed: _____

Comments / Recommendations:

